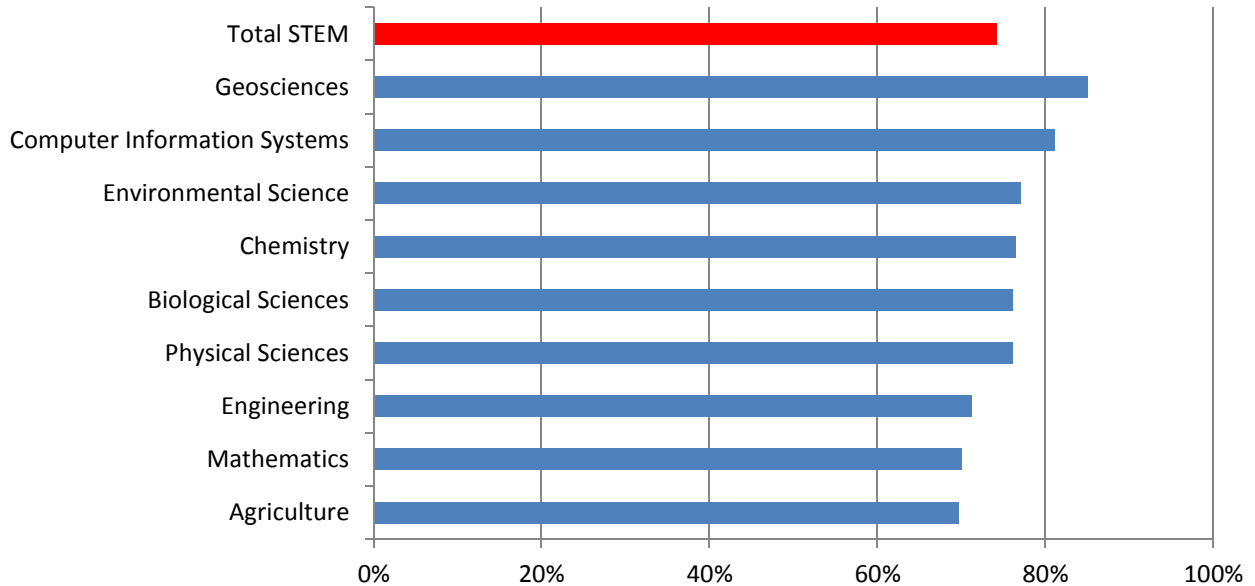


**STEM Table 4**  
**STEM Graduates' Oklahoma Employment Rates**  
**by STEM Field and Degree Level**  
**2012-13 Graduates - After One Year**  
**for All State System Graduates**

STEM Field	Bach	Mast	Doc	Cert	AAS	AA/AS
Agriculture	70%	49%	--		--	64%
Biological Sciences	76%	67%	57%	--	--	76%
Chemistry	76%	77%	73%			--
Computer Information Systems	81%	59%	--	81%	82%	79%
Engineering	71%	46%	57%	96%	82%	83%
Environmental Science	77%	80%	--			--
Geosciences	85%	63%	--			87%
Mathematics	70%	78%	--			80%
Military Technologies					--	
Physical Sciences	76%	76%	63%			80%
<b>Total STEM</b>	<b>74%</b>	<b>56%</b>	<b>59%</b>	<b>90%</b>	<b>82%</b>	<b>77%</b>

Note: Dashes (--) indicate data withheld to protect the privacy of individuals. Data are not reported for 5 or fewer graduates or employed graduates.

**Employment Rates of Bachelor's Degree Holders**  
**by STEM Field of Study**  
**2012-13 Graduates - After One Year**



Source: Oklahoma State Regents for Higher Education, Employment Outcomes data